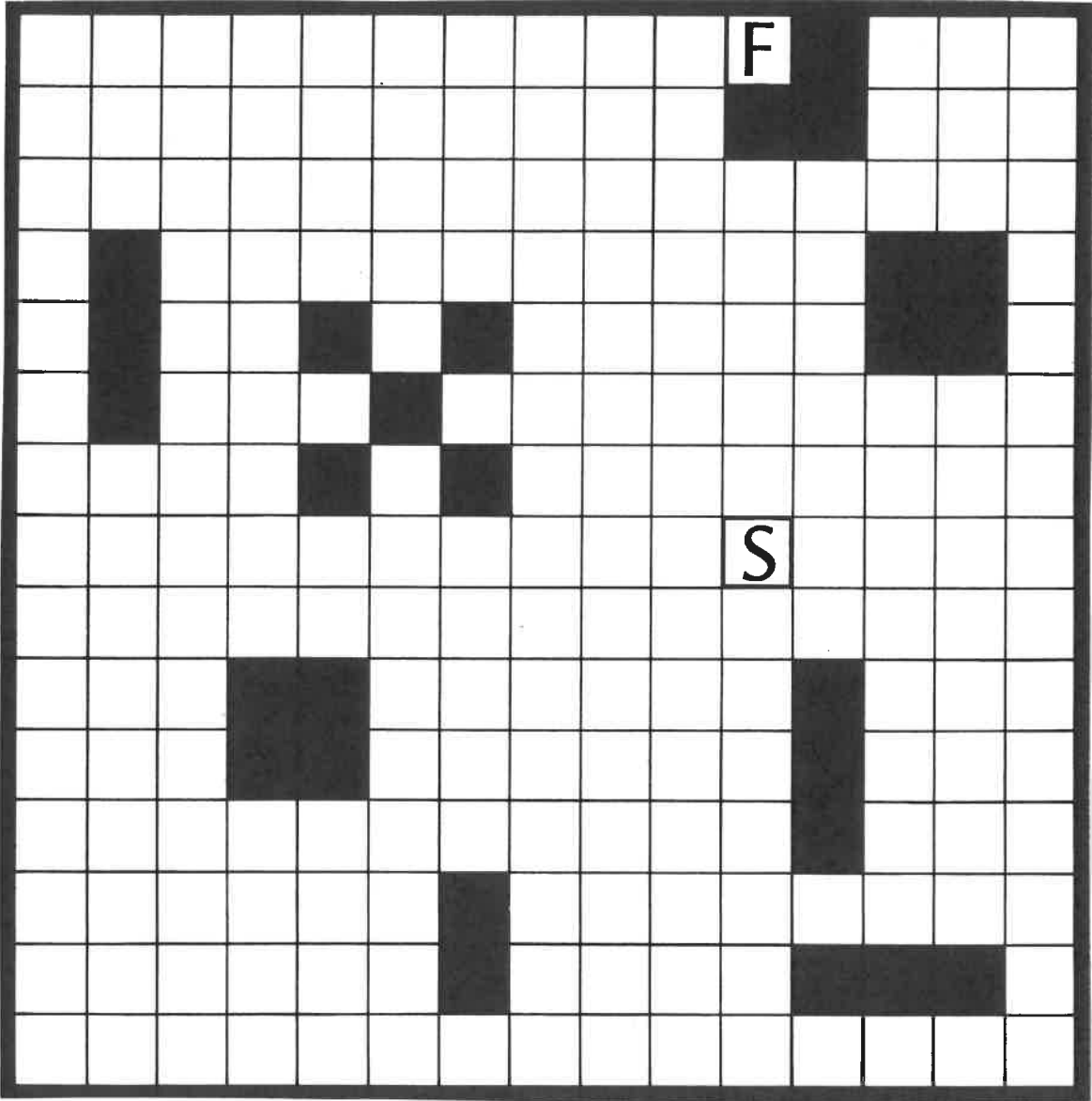


Color Match Doubles Addition



Directions: You will need to double all ten rods to wind your path through the maze. Use any order, but start with white to make the part come out right. Start at the S and end on the F.

Color Match Recording Sheet

List the doubles you created in the order you placed them on your Color Match Maze.

$$\underline{\quad} + \underline{\quad} = \underline{\quad}$$

$$\underline{\quad} + \underline{\quad} = \underline{\quad}$$

$$\underline{\quad} + \underline{\quad} = \underline{\quad}$$

$$\underline{\quad} + \underline{\quad} = \underline{\quad}$$

$$\underline{\quad} + \underline{\quad} = \underline{\quad}$$

$$\underline{\quad} + \underline{\quad} = \underline{\quad}$$

$$\underline{\quad} + \underline{\quad} = \underline{\quad}$$

$$\underline{\quad} + \underline{\quad} = \underline{\quad}$$

$$\underline{\quad} + \underline{\quad} = \underline{\quad}$$

$$\underline{\quad} + \underline{\quad} = \underline{\quad}$$

Color Match Doubles Addition Answer Key

- 1 + 1 = 2**
- 4 + 4 = 8**
- 6 + 6 = 12**
- 8 + 8 = 16**
- 7 + 7 = 14**
- 2 + 2 = 4**
- 9 + 9 = 18**
- 3 + 3 = 6**
- 5 + 5 = 10**
- 10 + 10 = 20**

